

# ABUNDANTLY SMALL



## PROJECT

**Costal Tiny Home**  
Florence, Oregon

**Area**  
430 SF Exterior Footprint

**Architect**  
Nir Pearlson, Architect

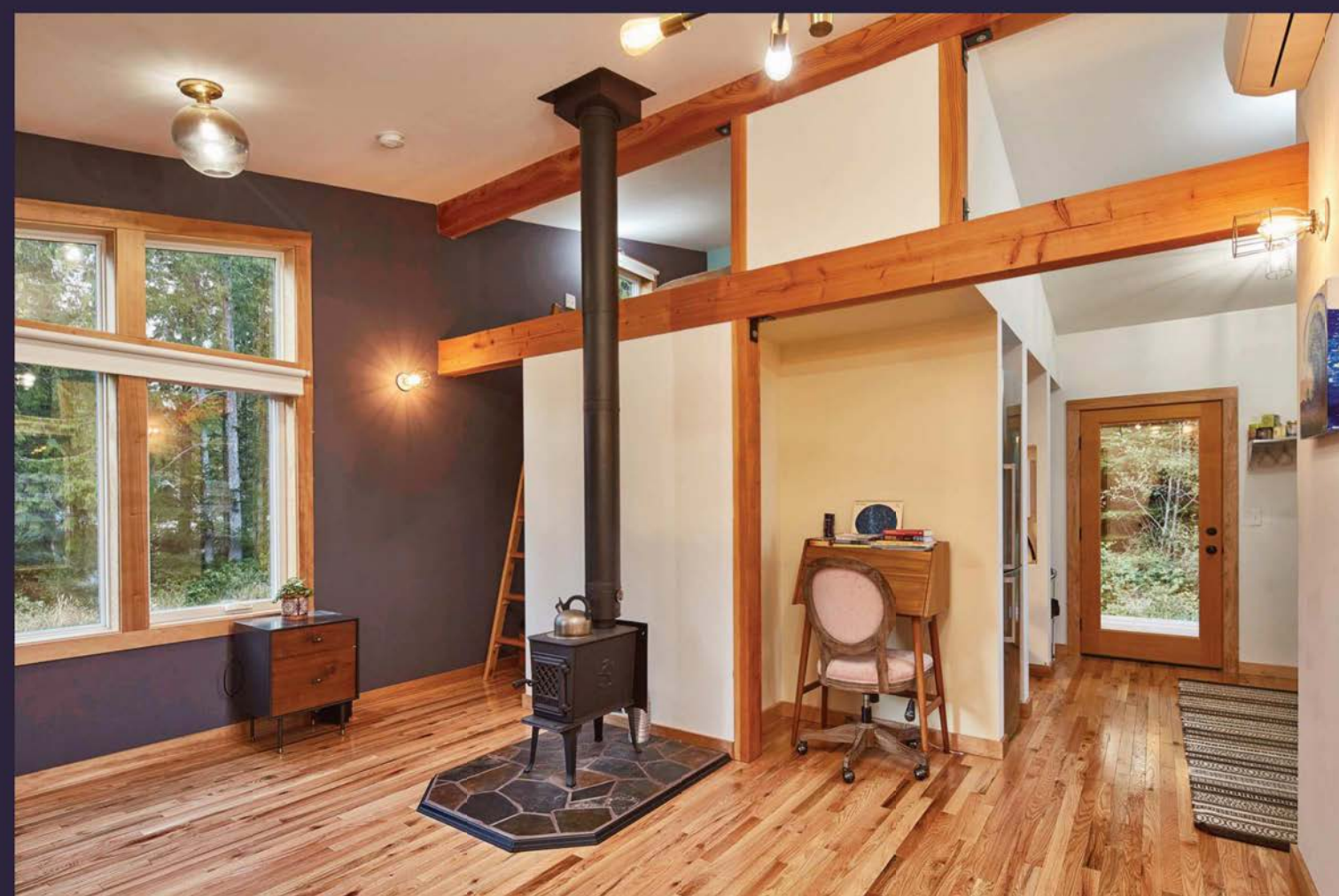
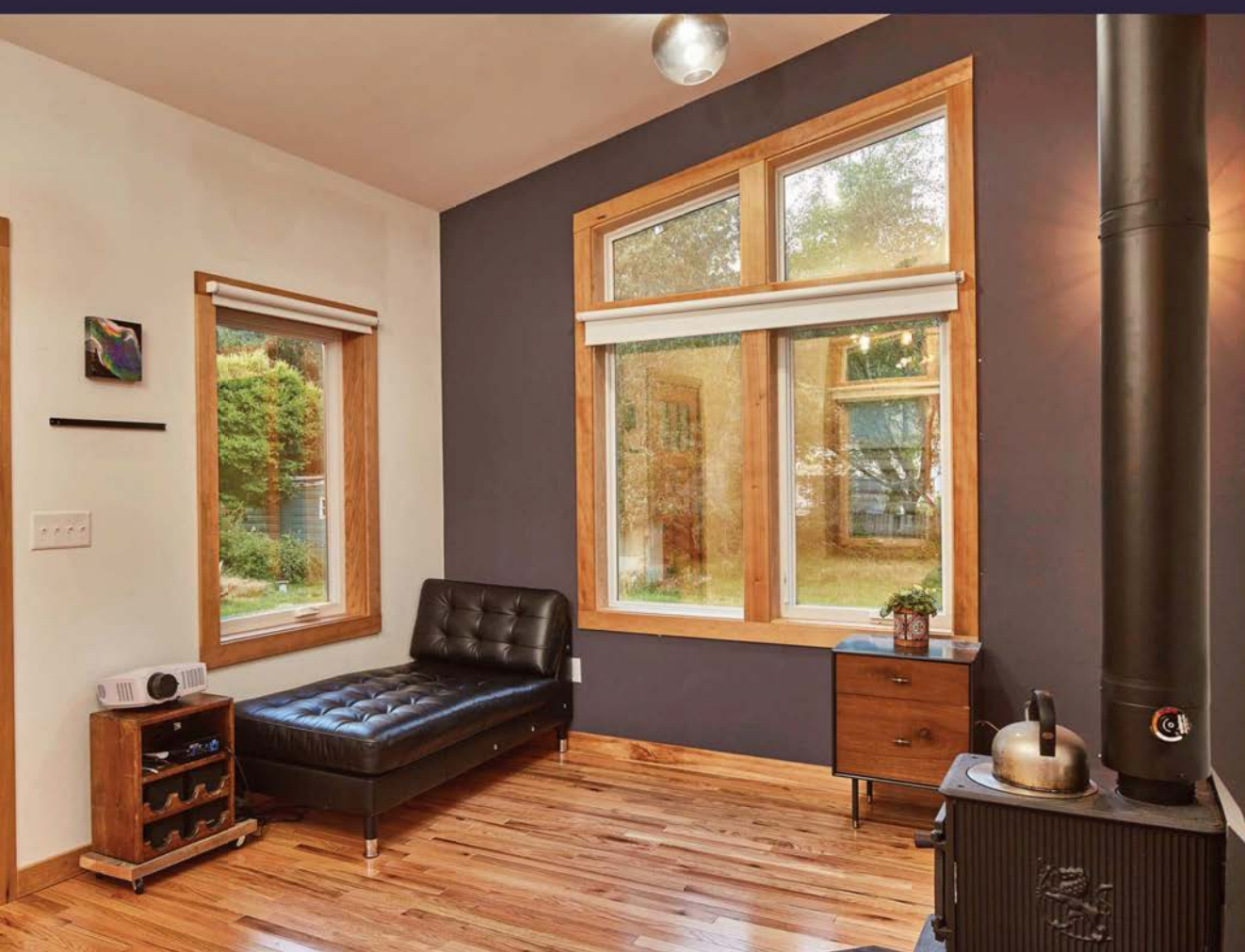
**Structural Engineer**  
CMS Engineering & Design

**General Contactor**  
Amal Stapleton

**Photos**  
Bronson Studios Photography

## SUSTAINABLE STRATEGIES

- Sustainable design features include: a tightly sealed and well-insulated envelope; abundant daylight via windows, glazed doors, and clerestories; durable, low-maintenance exterior and interior finish materials; high efficiency mini-split HVAC, and an on-demand mini water heater.
- The most sustainable aspect of this home is its size, with a diminutive ecological footprint as compared to the 2,345 SF American median home. From resource extraction through construction impact, to total energy usage over the building's lifecycle, this Tiny Home provides a beautiful, functional, and super-comfortable template for environmentally-conscious living.



## CONCEPTS

Within less than 400 SF of floor area, this compact mini-home provides all the spaces and amenities to support an expansive lifestyle:

- A living area with ample space for gathering and dining, all anchored with a central wood stove.
- A full kitchen with fixtures, appliances, and pantry.
- A luxurious bathroom with an antique claw-foot tub.
- A desk nook for study or work.
- A generous sleeping loft with plenty of storage space.
- With uninterrupted flow between the living areas, tall vaulted ceilings supported with exposed timber elements, and multiple windows in all directions, the interiors are spacious and light-filled.
- The sloped roof extends to shelter two covered outdoor living porches.

