

blossomCOTTAGES

missing middle housing

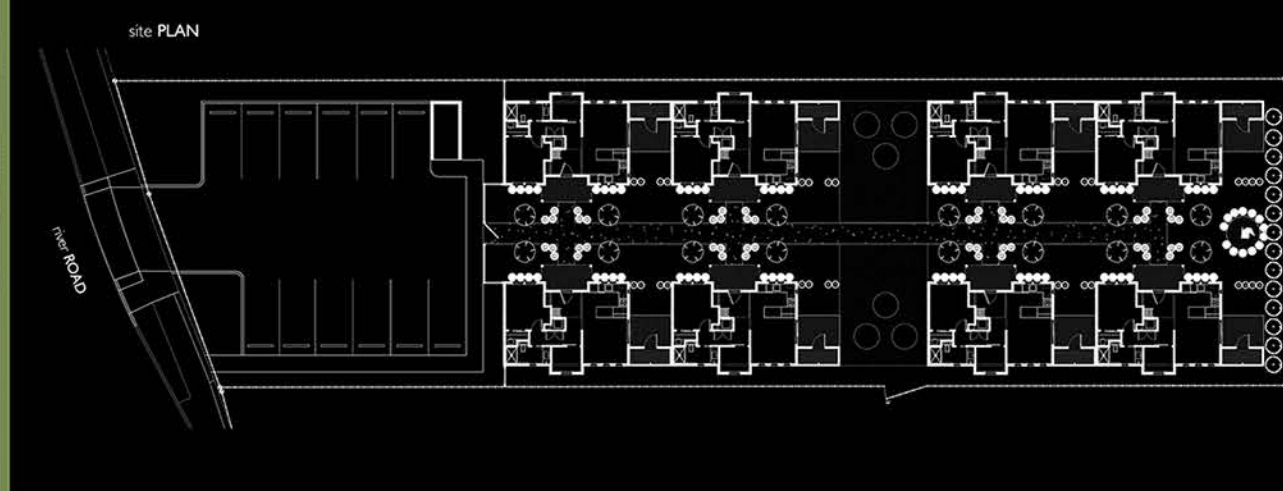


projectTEAM:

architect:
ARBOR SOUTH ARCHITECTURE, PC
dan HILL
bill RANDALL
sarah AMBROSE
ryan WALLA

general contractor:
ARBOR SOUTH CONSTRUCTION, INC.
dan HILL

photographer:
erik BISHOFF



designAPPROACH:

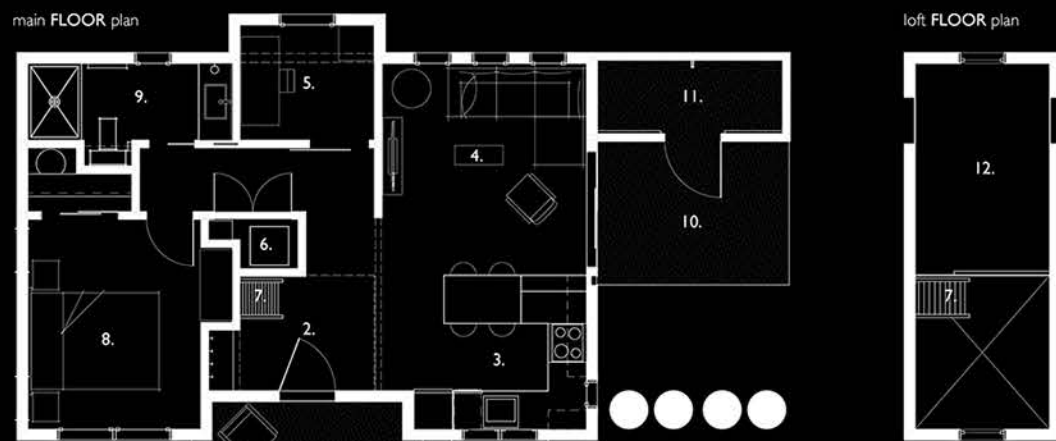
Blossom Cottages was named in honor of Blossom Hill, a wonderful woman committed to serving those who were often thought of as outcasts in our society. She had the vision and heart to lift up those around her who were unable to lift themselves and she instilled self-worth into hundreds of individuals whose paths she crossed. She had an infectious passion for people, animals, and our beautiful countryside with its vintage white farmhouses and barns. This passion of hers influenced our architectural theme for the cottages, which are also reminiscent of the farmhouses lining River Road between Eugene and Junction City.

Inspired by the Cottage Cluster concept, Blossom Cottages provides people privacy within individual dwellings while sharing in a beautiful environment, and creating more opportunity for connecting with neighbors. This project is a great example of Missing Middle Housing, which is defined as a "range of multi-unit or clustered housing types — compatible in scale with detached single-family homes — that help meet the growing demand for walkable urban living." One of the reasons we chose this site was for its access to the River Front Path which is less than 3 blocks away. Many other services are within walking distance including restaurants, coffee shops, grocery stores, general shopping, schools, churches and several medical services.

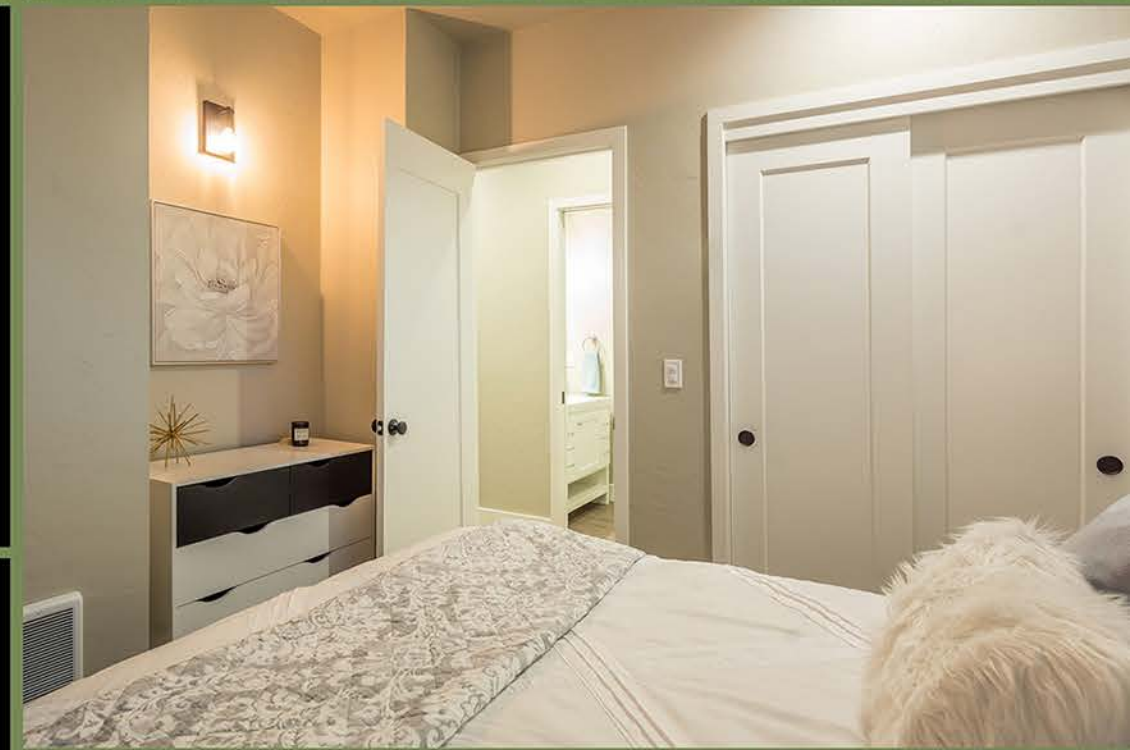
The concept of 'less is more' was a driving factor in the design of the cottages. With 670 square feet of conditioned space, efficiency, openness and livability became paramount to make these small cottages live and feel bigger than the actual numbers may suggest. The plan is laid out having a 'great room' focusing on a functional modern kitchen and a central circulation core connecting to a bedroom, 'flex space', and bathroom with a spacious but efficient layout. There is also a 70 square foot storage loft that, with future changes in the code, might become an additional sleeping or living space. In addition, each cottage has an exterior lockable 50 square foot storage room connected to the covered outdoor patio.

sustainableFEATURES:

Blossom Cottages was designed and built to be sustainable and durable. The special energy features include extra insulation and air sealing measures, great daylighting with energy efficient windows, LED lighting, low flow water fixtures, energy efficient appliances and ductless heating & cooling. The kitchen was designed with durable surfaces and contains energy efficient electric appliances. We have used quality products in constructing Blossom Cottages and we have a strong desire to keep it beautiful for years to come.



- 1. front PORCH
- 2. entry
- 3. kitchen/DINING
- 4. living ROOM
- 5. office/DEN
- 6. laundry
- 7. loft LADDER
- 8. master BED
- 9. bath ROOM
- 10. back PATIO
- 11. storage
- 12. loft



sustainable MEANINGFUL architecture

www.arborsouth.com

Arbor South ARCHITECTURE